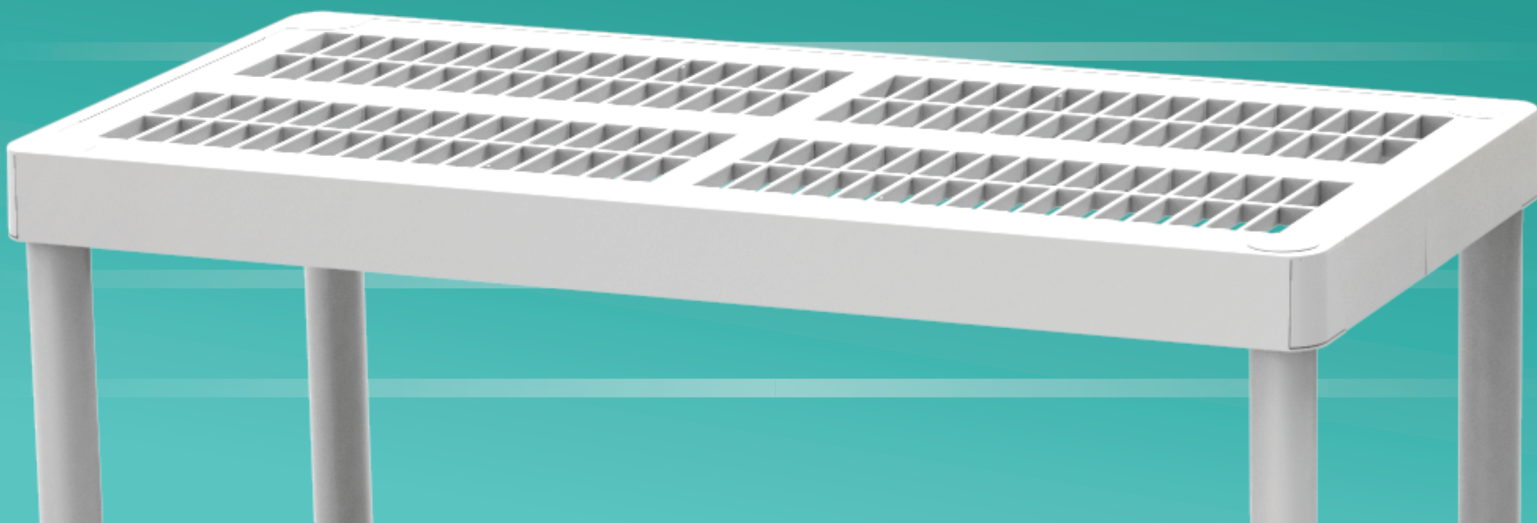


LINE HÉRCULES SHELVING UNIT

resistant - sustainable - intelligent



Developed to facilitate your business.

EXTREMELY DURABLE

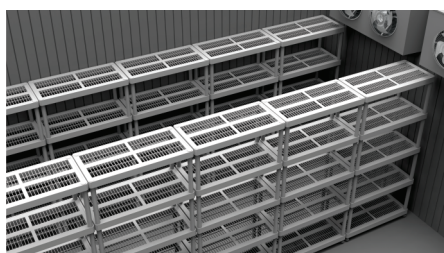
The Hercules Shelving Unit supports up to 154 lbs per shelf. Constructed from thick polypropylene for enhanced durability, it resists oxidation and wear.

HYGIENIC

Easy to clean, featuring a hollow grid design that improves air circulation and keeps your products elevated from the floor.

EASY ASSEMBLY

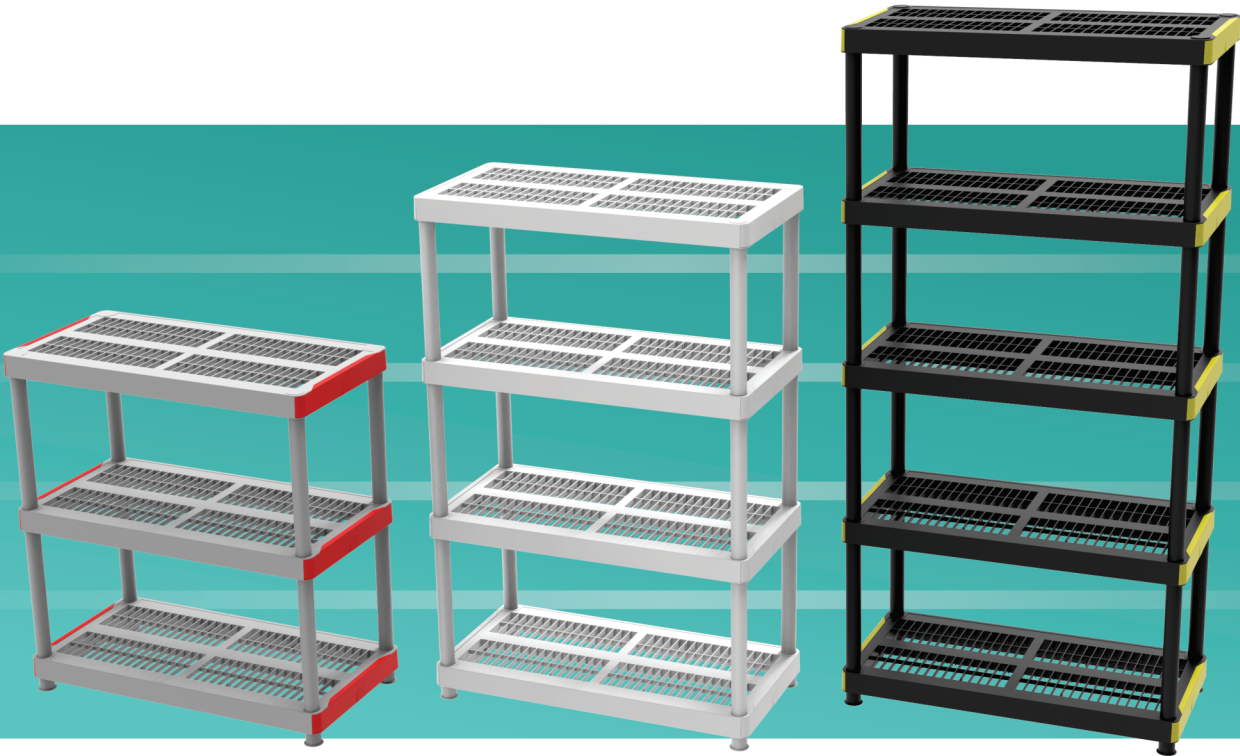
No tools are needed for assembly.



BPA FREE **ATOXIC SHELF**
Ideal for walk-in cooler.

ENHANCED VERSATILITY AND QUALITY

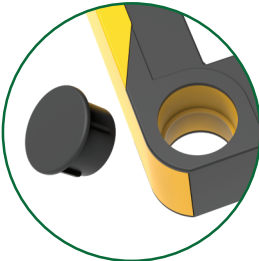
Featuring colored sides, perfect for organization using the Kanban method, enhancing process management, or simply coordinating with your decor.



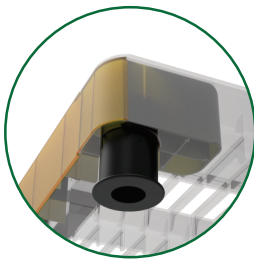
MODELS	NOMINAL DIMENSIONS length x width x height (in)	WEIGHT (lbs)	CAPACITY (lbs)	MATERIAL
3 SHELVES	35,83x17,72x38,39	15	463	PP
4 SHELVES	35,83x17,72x55,51	19	617	PP
5 SHELVES	35,83x17,72x72,83	26	772	PP



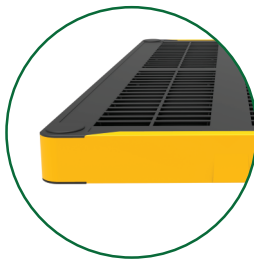
ROBUST
Up to 154 lbs per shelf



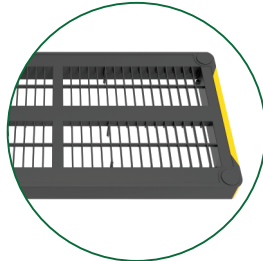
PROTECTIVE COVER
Prevents dirt buildup and keeps insects out.



SUPPORT FEET
Elevates products off the floor.



COLORFUL SIDES
Customizable.



VENTILATED
Enhances air circulation and promotes better hygiene.

