

LINE

SMART TRASH BINS

resistent - sustainable - inteligent



Developed to facilitate your business.

MORE VERSATILITY AND QUALITY

The perfect combination of design, robustness and security. The Smart Waste Bins are equipped with a silent lid that also cushions the impact when closing, a safety lock and a modern and compact design. Available in 3 sizes to suit all major needs.

SUSTAINABLE MATERIAL

Made with recycled materials that contribute to the reduction of solid waste improperly disposed of in the environment and the reduction of CO2 emissions.

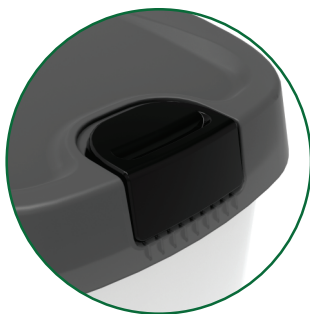


Resistant to impact, oil and temperature variations.
No metal parts in the composition.

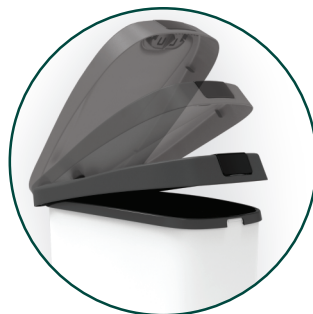
THE PERFECT COMBINATION OF INNOVATIVE DESIGN, TECHNOLOGY, SUSTAINABILITY AND SAFETY.



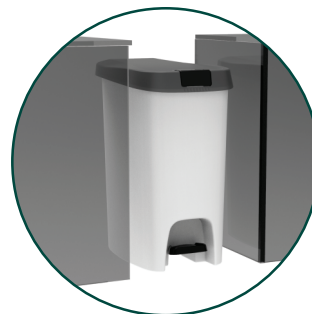
SIZES	NOMINAL DIMENSIONS length x width x height (in)	WEIGHT (lbs)	CAPACITY (ft³)	MATERIAL
0,57 ft ³	12,20x8,27x17,72	2,2	0,57	PP and POM STEEL
0,88 ft ³	12,20x8,27x17,72	5,5	0,88	PP and POM STEEL
1,77 ft ³	19,29x12,20x24,41	6,6	1,77	PP and POM STEEL



SECURITY LOCK
Smart mechanism to protect small accidents.



SILENT COVER
Silent closing movement



SLIM DESIGN
Fit anywhere



CUSTOM COLORS

