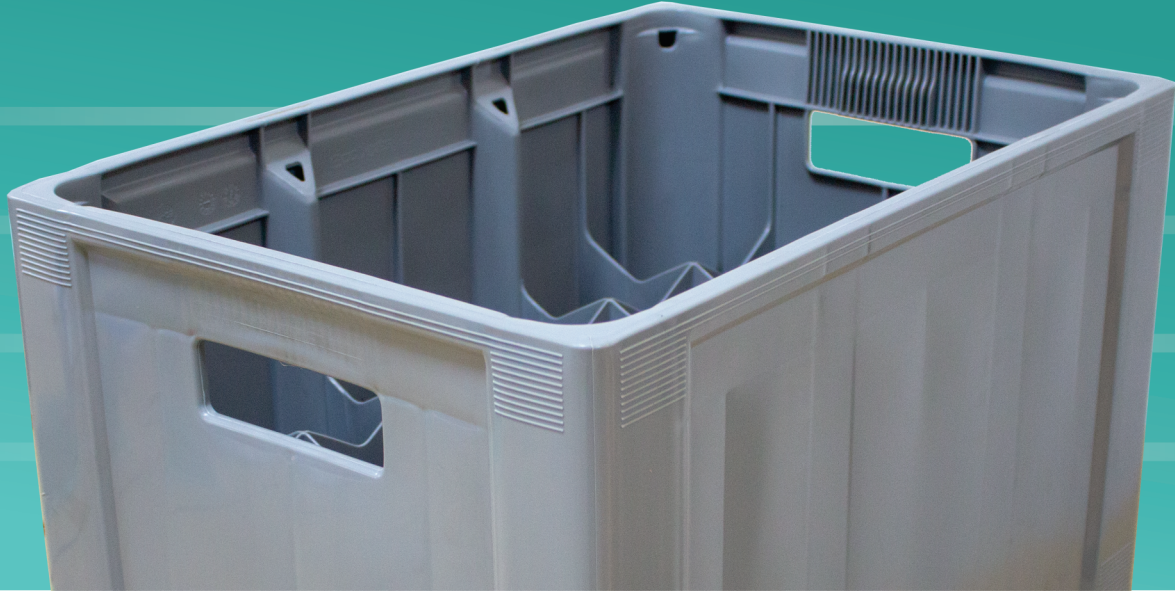


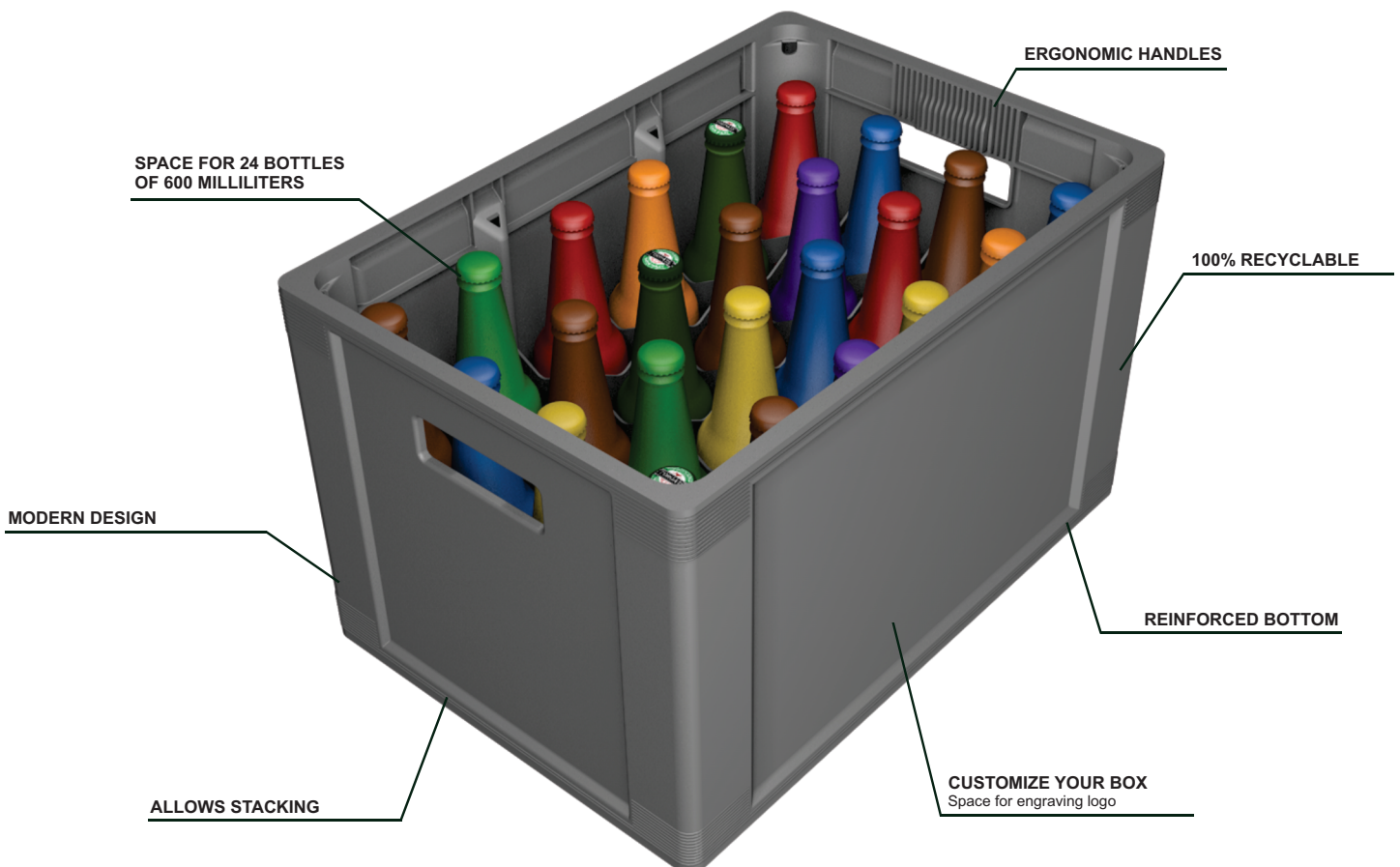
LINE  
**BOTTLE CRATE**

*resistent - sustainable - inteligent*



The Bottle Crate is an ideal solution for storing and transporting drinks. Developed with precision and care, it meets all standards and specifications applicable by the main players in the beverage industry, both in Brazil and on the global stage.

Best-selling product for the following segments: food, distributors and logistics operators.





**REINFORCED  
BOTTOM**



**STACKABLE**



**IMPACT  
RESISTANT**



**TEMPERATURE  
VARIATIONS**



**OIL  
RESISTANT**



**STACKABLE**

| <b>BOTTLE CRATE<br/>LINE</b> | <b>LENGTH</b> | <b>WIDTH</b> | <b>HEIGHT</b> | <b>PESO (kg)</b> | <b>CAP. (litros)</b> | <b>MATERIAL</b> |
|------------------------------|---------------|--------------|---------------|------------------|----------------------|-----------------|
| BOTTLE CRATE                 | 20,16         | 13,76        | 12,54         | 5,9              | 24 600ml<br>bottles  | PEAD-UV         |